

SPLASH MOUNTED FAUCETS



7-PS-60



7-PS-68



7-PS-50



7-PS-20

SINGLE HOLE PUNCH
Faucet omitted



7-PS-71

DOUBLE HOLE PUNCH
Faucet omitted



7-PS-70

LARGE SIZE SINK BOWL



7-PS-45

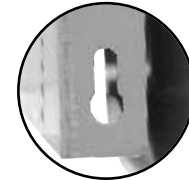
Features
Large Size
Sink Bowl
16" x 20" x 8"

Item #: _____ **Qty #:** _____

Model #: _____

Project #: _____

Keyhole Bracket for easier installation and greater stability.



FEATURES:

One piece **Deep Drawn** sink bowl design.

Sink bowl is 10" x 14" x 5"*.

(*7-PS-45 sink bowl size is 16" x 20" x 8")

All sink bowls have a large liberal radii with a minimum dimension of 2" and are rectangular in design for increased capacity.

Keyhole wall mount bracket.

Stainless steel basket drain 1-1/2" IPS.

Specific Features:

7-PS-50 features lever operated drain and built-in overflow with plastic overflow tube and spring clamps. P-Trap is 1 1/2".

7-PS-20 4" O.C. deck mounted centerset faucet furnished with aerator.

7-PS-45, 7-PS-50 & 7-PS-60 4" O.C. splash mounted gooseneck faucet, chrome plated & furnished with aerator.

7-PS-68 4" O.C. splash mounted gooseneck faucet with Wrist Handles, chrome plated & furnished with aerator.

CONSTRUCTION:

All TIG welded.

Welded areas blended to match adjacent surfaces and to a satin finish.

Die formed Countertop Edge with a No-Drip offset.

One sheet of stainless steel - No Seams.

MATERIAL:

Heavy gauge type 304 series stainless steel.

Wall mounting bracket is Galvanized and of offset design.

All fittings are brass / chrome plated unless otherwise indicated.

MECHANICAL:

Faucet supply is 1/2" IPS male thread hot and cold.

**FOR REPLACEMENT FAUCET, DRAINS AND ACCESSORIES
SEE PAGE B-13 & SECTION G**

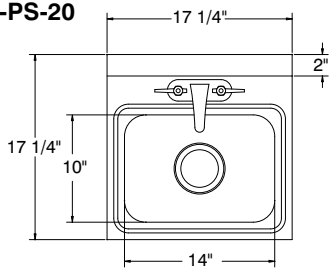
DIMENSIONS and SPECIFICATIONS

TOL Overall: ± .500" Interior: ± .250"

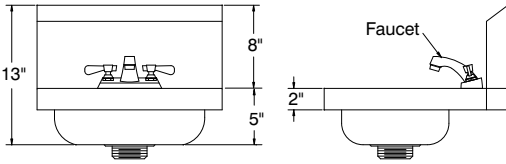
FITTINGS SUPPLIED AS SHOWN

ALL DIMENSIONS ARE TYPICAL

7-PS-20

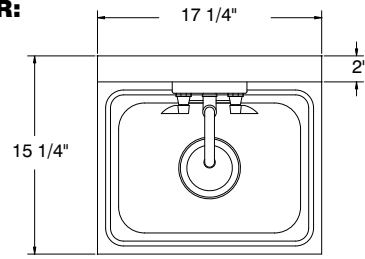


15 lbs.



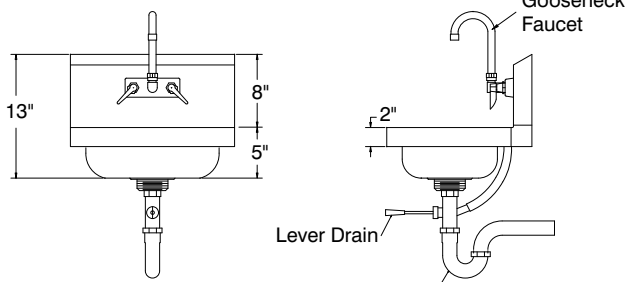
TOP VIEW FOR:

**7-PS-50
7-PS-60
7-PS-68
7-PS-70**



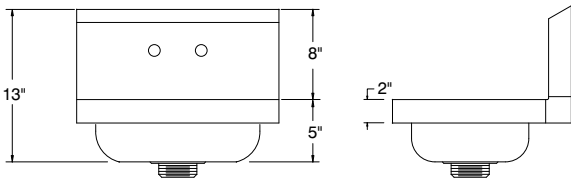
Sink Bowl 10" x 14" x 5"

7-PS-50



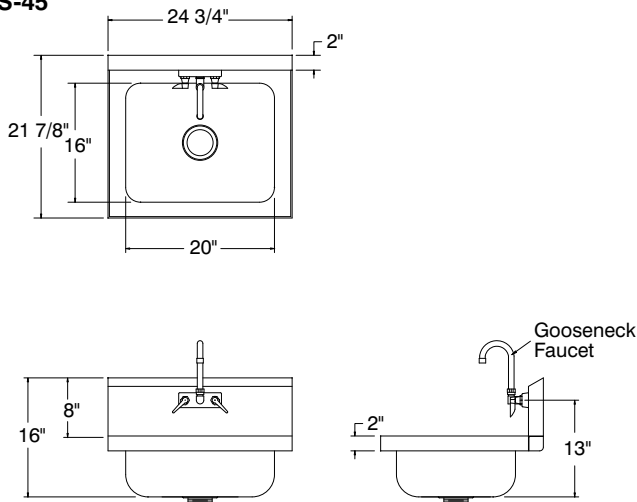
15 lbs.

7-PS-70



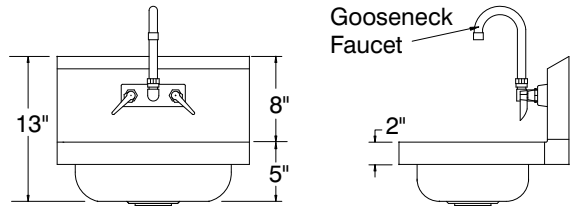
12 lbs.

7-PS-45



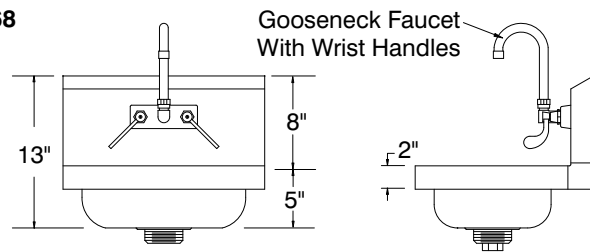
31 lbs.

7-PS-60



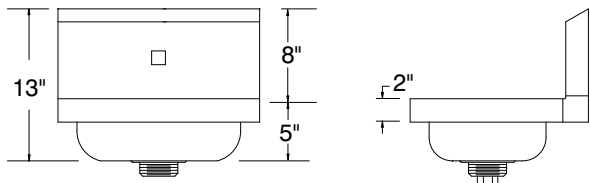
13 lbs.

7-PS-68



13 lbs.

7-PS-71



12 lbs.

SUGGESTED PLUMBING

