



# QUICK CART



EXECUTIVE  
SERIES™

SMART DESIGN. TRUSTED EXPERIENCE.



## WHEN IMAGE IS EVERYTHING, CART-LESS IS KEY

Around the clock, 365 days a year, your staff works diligently to maintain a neat, clean appearance throughout your facility. This ensures your guests and visitors experience the comfort and cleanliness they expect 24/7.

Rubbermaid Commercial Products is proud to introduce Quick Cart, the industry's most durable mobile cart solution that empowers staff to maintain areas discreetly and efficiently.

Quick Cart is designed to:

- *Provide a premium guest experience, keeping the cleaning process hidden from view of guests*
- *Easily move throughout the property with a lightweight, compact, and durable construction*
- *Deliver a flexible solution, customizable for the unique needs of your property*



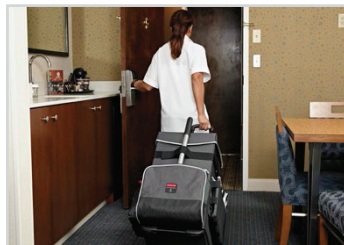
## CART-LESS SOLUTION BENEFIT

Ergonomic design and innovative features provide superior cleaning solutions.



### Discreet Appearance

Compact design remains inconspicuous by blending into public areas and disappearing into guest rooms.



### Compact and Ergonomic Design

Lightweight and more compact than traditional carts for easier maneuverability in tight spaces.



### Versatility

Versatile compartments allow for multiple configurations and uses, including housekeeping, maintenance, and more.



# RUBBERMAID QUICK CART



EXECUTIVE  
SERIES™



Rubbermaid Quick Cart is the industry's most durable mobile cart solution for housekeeping, janitorial and maintenance environments. Constructed with high-performance materials for added strength and durability, this compact cart withstands rigorous daily use. Treated with Dupont™ Teflon® fabric protector, Rubbermaid Quick Cart repels water, oil and stains, to greatly extend the life of the cart. Additional features that make Quick Cart the best in durability include:

- **ALUMINUM TELESCOPING HANDLE** is dependable for heavy daily use
- **ROBUST BALL-BEARING WHEELS** are designed for reduced noise and heavy-duty use
- **INNER LINER** is treated with Teflon® fabric protector and is removable for easy cleaning or replacement



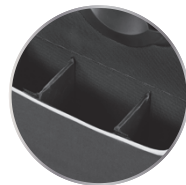
## Repels Water, Oil, and Stains

Teflon® fabric protector helps maintain Quick Cart aesthetics and protects from rigorous daily use.



## Heavy-Duty Kick Plate

Reinforced rubberized kick plate for increased durability and reduced wear and tear.



## ADJUSTABLE DIVIDERS

Dividers can be moved or removed to create multiple compartments to meet your specific cleaning needs.



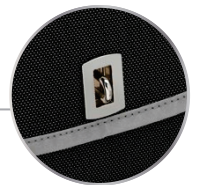
## SECURED STICK GOODS

Heavy-duty fastening strap wraps around supplies to keep them secure while the cart is in motion.



## REMOVABLE CARRY CADDY

Rigid dividers improve efficiency, keeping amenities and supplies organized.



## SECURE SUPPLIES

Durable lid conceals supplies and features hardware for adding a lock to prevent unauthorized access to cart and its contents.



1902465 Executive Quick Cart – Large

## CUSTOMIZABLE FOR THE UNIQUE NEEDS OF YOUR PROPERTY



### HOUSEKEEPING

**Great For:**

- Traditional Housekeeping
- Turn-Down Service
- Towel Refresh
- Food & Beverage Restocking

### JANITORIAL

**Great For:**

- Public Spaces
- Lobby Cleaning
- Fitness Center
- Poolside

### MAINTENANCE

**Great For:**

- Back-of-House Services
- Guest Room Maintenance





When converting to a cart-less cleaning solution, staff will experience a new and innovative approach to cleaning. With a professional and discreet appearance, Rubbermaid Quick Cart blends seamlessly into the environment to provide a premium guest experience. To make the transition to cart-less cleaning smooth for your property, consider the following helpful tips.

## SUGGESTIONS FOR IMPLEMENTING RUBBERMAID QUICK CART



### 1. Create a Standard Process for Your Property

- Define the pack-out process for each use throughout the property (Housekeeping, Turn-Down Service, Public Spaces).
- Designate areas for stocking Quick Carts and for storing replenishment supplies.



### 2. Pair with Complementary Products

- Pair with Rubbermaid Executive Series X-Cart to manage soiled linens and utilize closets on each floor for stocking clean linens.



### 3. Define Roles and Responsibilities

- Define staff responsibility for stocking carts, restocking supplies in pack-out area, linens removal, and glassware replacement.



### 4. Engage Staff

- Train the staff on the new standard process.
- Engage in discussion and answer questions.
- Ask for staff feedback to optimize the new cleaning process to best meet the needs of your property.

## QUICK CART SOLUTION SETS

### HOUSEKEEPING

Discreet, lightweight and compact design stays hidden from guests' view.



### JANITORIAL

Compact and discreet appearance allows staff to blend into public areas.



### MAINTENANCE

Versatile design allows staff to efficiently service guest rooms and public areas.



## LINEN & WASTE MANAGEMENT

### ■ 1881781 COLLAPSIBLE MULTI-STREAM X-CART (2X4-BUSHEL) WITH 1889864 COVER

Multi-stream option provides the ability to easily divide and sort materials, perfect for collecting and transporting linens and waste.



### ■ 1881750 COLLAPSIBLE X-CART, (8-BUSHEL) WITH 1889864 COVER

Industry-leading capacity of up to 220 lbs., the versatile Collapsible X-Cart system delivers reliable, long-lasting performance.



### ■ 1867539 EXECUTIVE TILT TRUCK 3/4 CUBIC YARD, SF, W/QUIET CASTERS

Durable molded trucks with quiet casters move quickly and quietly throughout a property, while handling heavy loads with ease.







**CARPET CARE**

- **1868440 EXECUTIVE 12" MANUAL-HEIGHT UPRIGHT VACUUM CLEANER**  
Durable vacuum provides superior filtration and allows for easy height adjustment with four height options and onboard tools.



**HARD FLOOR CARE & SAFETY**

- **1867396** 11" Microfiber Flexible Flat Mop Frame, Single-Sided
- **1863883** 20" to 40" Telescoping Handle
- **FGQ89100BL00** Microfiber Damp Mop Cover
- **FGQ86100WH00** Microfiber Hi-Pile Cover
- **FGQ87100BL00** Glass Mop Cover



1867396



FGQ89100BL00

**SURFACE CLEANING**

- **1863890** 12" Brown Multipurpose Microfiber Cloth
- **FGQ85200WH00** 22" Multipurpose Flexible Microfiber Duster and Frame



1863890



FGQ85200WH00

- **FG421588BLA EXECUTIVE DUAL-ACTION BRUSHLESS MECHANICAL SWEEPER**  
Two rubber agitator rolls and superior low-profile design provide maximum cleaning power to collect dust, dirt, and debris.



- **1867508** Executive Multi-Lingual Wooden Caution Sign, 2-Sided, Stainless
- **1863896** Executive WaveBrake™ Side-Press Mop Combo, Black



1867508



1863896

- **1863888** 12" Gray Multipurpose Microfiber Cloth
- **FGQ85200WH00** 22" Multipurpose Flexible Microfiber Duster and Frame
- **1867396** 11" Microfiber Flexible Flat Mop Frame, Single-Sided and **FGQ889100BL00** Microfiber Flexi-Frame Damp Mop Cover
- **1863883** 20" to 40" Telescoping Handle



1867396 & FGQ86100WH00



1863883

- **1868433 EXECUTIVE 6-QT. CAPACITY BACKPACK VACUUM CLEANER**  
Innovative frame design keeps motor and its heat away from the body while promoting airflow and comfortable use.



- **1867505** Executive Multilingual Caution Sign, 2-Sided, Black
- **1861211** Executive 24" Multisurface – Medium Sweep Push Broom



1867505



1861211

- **1863889** 16" Gray Multipurpose Microfiber Cloth
- **1863891** 16" Brown Multipurpose Microfiber Cloth
- **FG9C03060000** 32 oz.-Spray Bottle and Trigger



1863888



FG9C03060000



1902467



1902466



1902465

## QUICK CART SPECIFICATION GUIDE

| Description                     | Executive Quick Cart – Large   | Executive Quick Cart – Medium  | Executive Quick Cart – Small   |
|---------------------------------|--------------------------------|--------------------------------|--------------------------------|
| Quick Cart Product Number       | 1902465                        | 1902466                        | 1902467                        |
| Quick Cart Weight               | 18.00 lbs.                     | 14.25 lbs.                     | 12.25 lbs.                     |
| Quick Cart Outer Dimensions     | 16.50" L x 14.25" W x 25.00" H | 16.50" L x 14.25" W x 21.00" H | 16.50" L x 14.25" W x 17.00" H |
| Quick Cart Inner Dimensions     | 16.00" L x 12.50" W x 22.50" H | 16.00" L x 12.50" W x 18.50" H | 16.00" L x 12.50" W x 14.50" H |
| Maximum Weight Capacity (lbs)   | 60.00 lbs.                     | 40.00 lbs.                     | 30.00 lbs.                     |
| Internal Storage Capacity       | 2.60 ft <sup>3</sup>           | 2.14 ft <sup>3</sup>           | 1.68 ft <sup>3</sup>           |
| Quick Cart Caddy Product Number | 1902468                        | 1902468                        | 1902459                        |
| Quick Cart Caddy Dimensions     | 14.00" L x 11.00" W x 5.50" H  | 14.00" L x 11.00" W x 5.50" H  | 10.50" L x 11.00" W x 5.50" H  |
| Quick Cart Caddy Capacity       | 15.00 lbs.                     | 15.00 lbs.                     | 10.00 lbs.                     |

## CADDIES AND LINERS

### CADDIES



### REPLACEMENT LINERS



### PLASTIC POCKET LINERS



| No.        | Color     | Description                                    |
|------------|-----------|--|
| 1902468*   | Dark Gray | Executive Quick Cart Caddy, Large              |
| 1902459**  | Dark Gray | Executive Quick Cart Caddy, Small              |
| 1919270*** | Clear     | Executive Quick Cart Plastic Pocket Liner      |
| 1902701    | Black     | Executive Quick Cart Replacement Liner, Large  |
| 1902702    | Black     | Executive Quick Cart Replacement Liner, Medium |
| 1902703    | Black     | Executive Quick Cart Replacement Liner, Small  |

\* Replacement for Medium and Large Executive Quick Carts.

\*\* Replacement for Small Executive Quick Carts.

\*\*\*Replacement for all Executive Quick Carts.