



DISPOSER MOUNTINGS

Sink Bowl Assemblies

AVAILABLE SIZES



12" BOWL



15" BOWL



18" BOWL

- Perfect for dishtable and drainboard installations or other custom design.
- All bowls made from 16 gauge stainless steel.
- 12" and 15" bowl sinks are provided one adjustable water nozzle. 18" bowl has two nozzles provided.
- Includes mounting adapter for mounting disposer to bowl.

BOWL ASSEMBLY TYPES (Each type available in all 3 sizes)



TYPE "A"

- Includes removable splash baffle.
- Includes reversible bowl cover for either flush mounted, to provide larger working area, or inverted for greater waste confining recessed area.



TYPE "B"

- Includes stainless steel sleeve guard which helps reduce silverware loss.
- Includes removable splash baffle that mounts to top of sleeve guard which can be used as a scrap block.



TYPE "C"

- Includes removable splash baffle.
- Baffle sits up 1/2" from bowl opening to help prevent silverware loss.

Our products appear on **The KCL CADalog** CD-ROM based CAD Foodservice Symbol Library. More information is available from **Kochman Consultants, Ltd.** at www.kclcad.com.



4700 21st STREET
RACINE, WI 53406
TEL: 800-845-8345
FAX: 262-554-3620

www.insinkerator.com



The Emerson logo is a trademark and a service mark of Emerson Electric Co.





DISPOSER MOUNTINGS



No. 5 Sink Flange Mounting Assembly

- 3 1/2" – 4" Sink Opening
- No Welding Required



Short No. 5 Sink Flange Mounting Assembly

- 3 1/2" – 4" Sink Opening
- No Welding Required
- 2 1/2" Shorter for limited space under sink



No. 6 Collar Adaptor

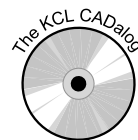
- For welding into stainless troughs
- Permanently installed splash baffle
- Includes mounting adaptor for mounting disposer
- Inside dimension collar: 6 5/8"



No. 7 Collar Adaptor

- For welding into stainless sinks
- Includes stopper and removable splash baffle
- Includes mounting adaptor for mounting disposer
- Inside dimension collar: 6 5/8"

Our products appear on **The KCL CADalog** CD-ROM based CAD Foodservice Symbol Library. More information is available from **Kochman Consultants, Ltd.** at www.kclcad.com.



4700 21st STREET
 RACINE, WI 53406
 TEL: 800-845-8345
 FAX: 262-554-3620

www.insinkerator.com

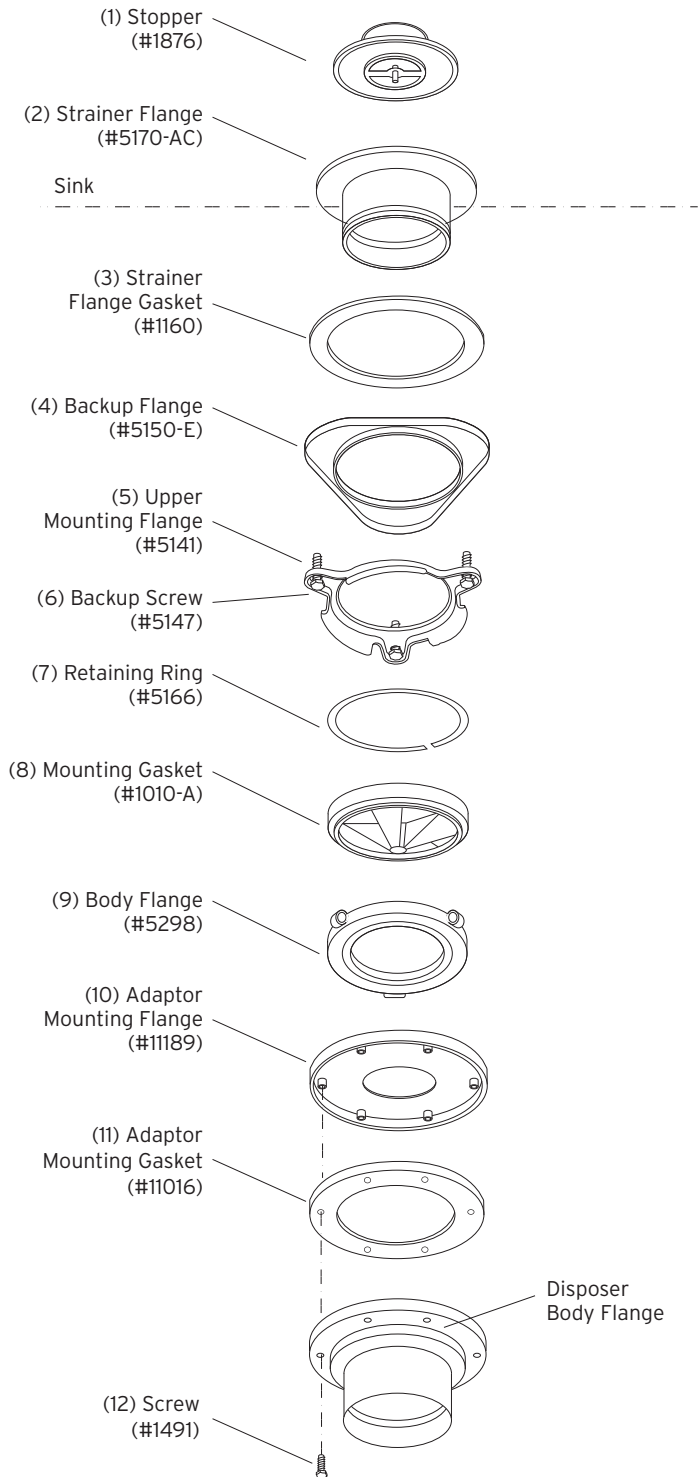


The Emerson logo is a trademark and a service mark of Emerson Electric Co.



#5 Sink Flange Assembly (#12506)

This adaptor will fit a sink opening of: 3-1/2" - 4" I.D.



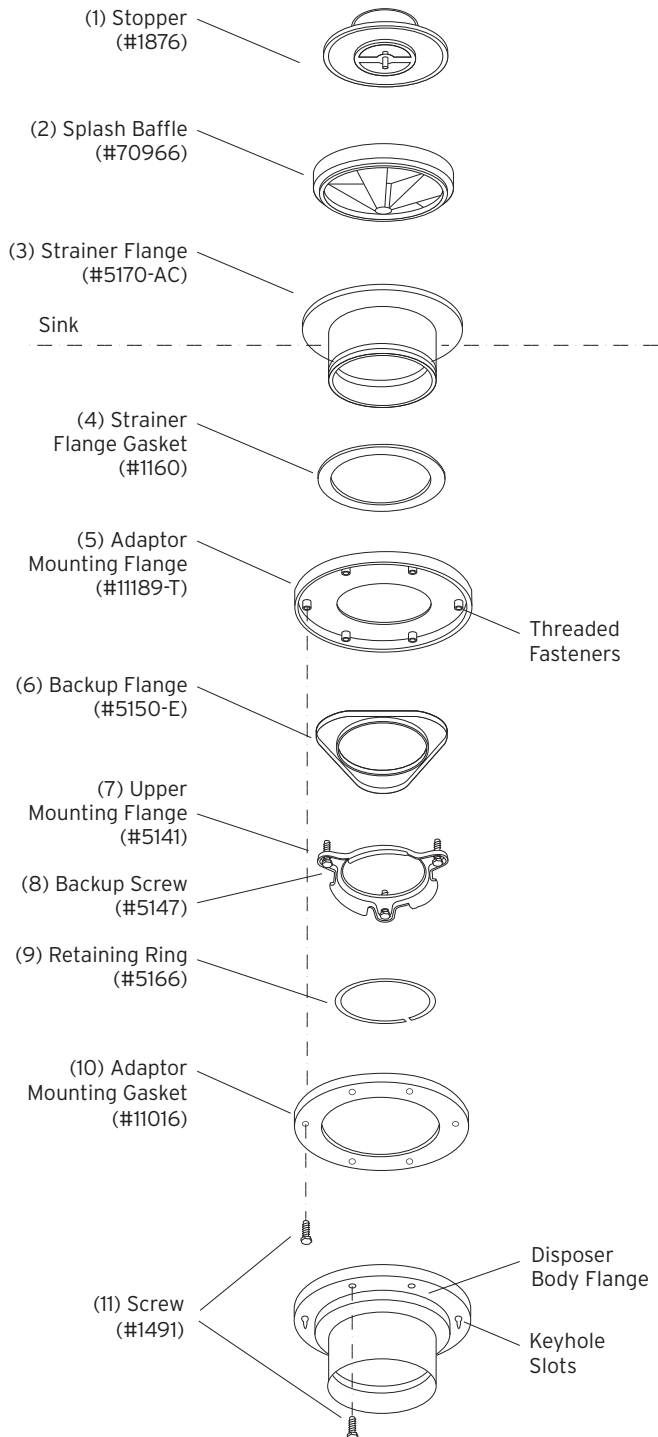
Installation Instructions

1. Unscrew the three backup screws (6) until they are flush with the upper mounting flange (5) surface. Pry the retaining ring (7) free from the strainer flange (2) with a screwdriver and separate all mounting assembly parts (2-7).
2. Evenly apply 1/2 inch thick rope of plumber's putty around new strainer flange. Insert the strainer flange (2) into the sink opening and press firmly in place. Clean away any excess putty.
3. From underneath the sink, place the strainer flange gasket (3), backup flange (4) - flat side up, and upper mounting flange (5) over the strainer flange (2) and hold them up to the sink. Fit the retaining ring (7) into the groove on the strainer flange (2) is held securely in place.
4. Tighten the three backup screws (6) evenly until the backup flange (4) draws snugly against the underside of the sink and the strainer flange (2) is held securely in place.
5. Place the body flange (9) lugs upward over the lip of the adaptor mounting flange (10) and fit the mounting gasket (8) onto the lip.

NOTE: Apply soapy water to mounting gasket (8) to ease installation.
6. Place the adaptor mounting gasket (11) on the disposer body flange. Secure the adaptor mounting flange (10) to the top of the disposer with six screws (12) provided.
7. Raise the disposer to the upper mounting flange (5) so the body flange is positioned with the lugs to the right of the screws (12).
8. While supporting the unit, turn the body flange (9) to the right into the mounting flange (5) until the unit hangs freely. Insert the service wrench into the left side of a lug and continue to turn the body flange (9) to the right (approximately one quarter turn) until it locks into position on the upper mounting flange (5).

NOTE: Failure to lock into position may cause the disposer to loosen during operation.
9. Swivel the unit to align the discharge outlet with the drain trap. (Unit can be turned 360 degrees for easy installation).

This adaptor will fit a sink opening of: 3-1/2" - 4" I.D.

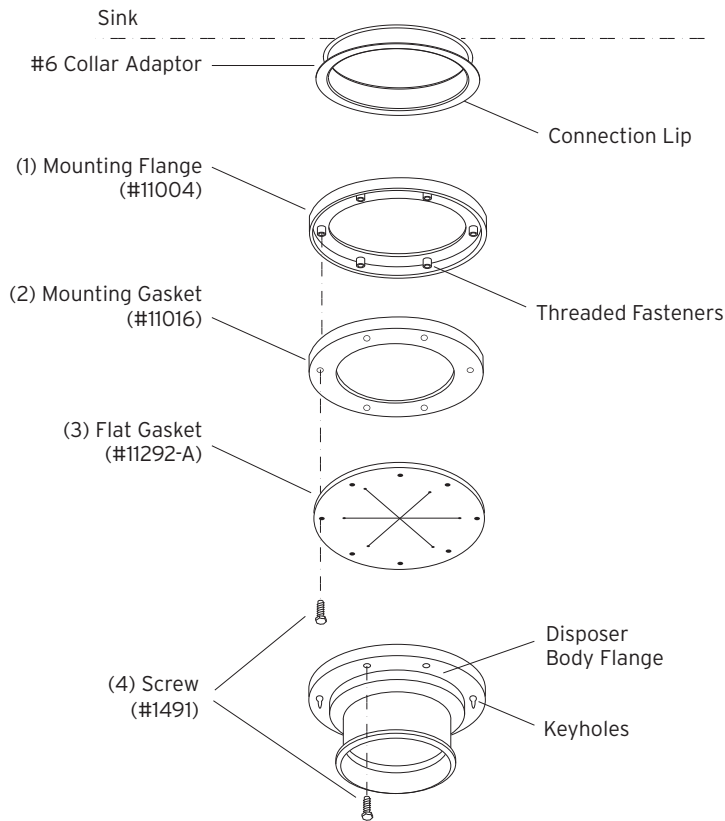


Installation Instructions

1. Unscrew the three backup screws (8) until they are flush with the upper mounting flange (7) surface. Pry the retaining ring (9) free from the strainer flange (3) with a screwdriver and separate all mounting assembly parts (3, 4, 6-9).
2. Evenly apply a 1/2 inch thick rope of plumber's putty around new strainer flange. Insert the strainer flange (3) into the sink opening and press firmly in place. Clean away any excess putty.
3. From underneath the sink, place the strainer flange gasket (4), adaptor mounting flange (5), backup flange (6), and upper mounting flange (7) over the strainer flange (3) and hold them up to the sink. Fit the retaining ring (9) into the groove on the strainer flange (3) to hold the mounting parts in place.
4. Tighten the three backup screws (8) evenly until the backup flange (6) draw snugly against the underside of the adaptor mounting flange (5).
5. Position the disposer for plumbing hookup and check the location of the keyhole slots in the disposer body flange.
6. Attach two screws (11) through opposite holes in adaptor mounting gasket (10) and into the threaded fasteners of the adaptor mounting flange (5). The screws (11) should be protruding approximately 1/4 inch below the adaptor mounting gasket (10).
7. Position the disposer beneath the adaptor mounting gasket (10) and engage the two protruding screws (11) in the keyhole slots in the disposer body flange. Assemble the remaining four screws (11). Tighten all screws evenly.

NOTE: This Short #5 Mounting Assembly allows an additional 2-1/4" clearance between the bottom of the disposer and the floor.

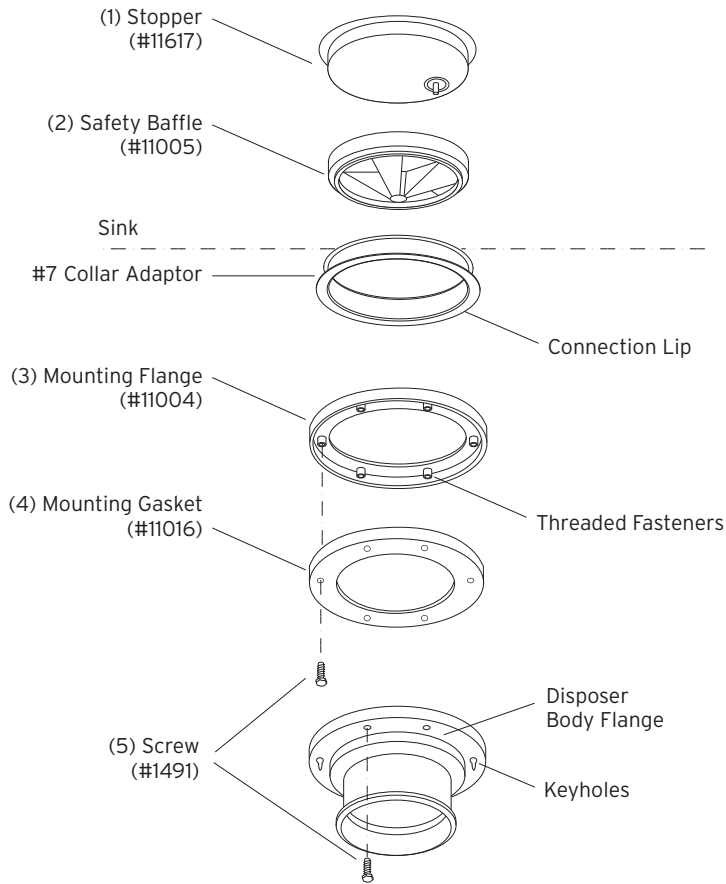
Mounting Adaptor (#6 Collar Adaptor)



Installation Instructions

1. Place mounting flange (1) up over the #6 collar adaptor connection lip. It may require a slight force fit.
2. Push mounting flange (1) up out of the way and fit mounting gasket (2) onto the #6 collar adaptor connection lip.
3. Move mounting flange (1) down over mounting gasket (2). Be certain that the threaded fasteners in the mounting flange (1) fit into recesses in the top of the mounting gasket (2).
4. Attach two screws (4) through opposite holes in the flat gasket (3), mounting gasket (2), and into the threaded fasteners in the mounting flange (1). The screws (4) should be protruding approximately 1/4 inch below the flat gasket (3).
5. Position the disposer beneath the flat gasket (3) and engage the two protruding screws in the keyhole slots in the disposer body flange. Assemble the remaining four screws (4) and turn the disposer into place for plumbing connections. Tighten all screws evenly to secure the unit.

Mounting Adaptor (#7 Collar Adaptor)



Installation Instructions

1. Place mounting flange (3) up over the #7 collar adaptor connection lip. It may require a slight force fit.
2. Push mounting flange (3) up out of the way and fit mounting gasket (4) onto the #7 collar adaptor connection lip.
3. Move mounting flange (3) down over mounting gasket (4). Be certain that the threaded fasteners in the mounting flange (3) fit into recesses in the top of the mounting gasket (4).
4. Attach two screws (5) through opposite holes in the mounting gasket (4), and into the threaded fasteners in the mounting flange (3). The screws (5) should be protruding approximately 1/4 inch below the mounting gasket (4).
5. Position the disposer beneath the mounting gasket (4) and engage the two protruding screws in the keyhole slots in the disposer body flange. Assemble the remaining four screws (5) and turn the disposer into place for plumbing connections. Tighten all screws evenly to secure the unit.
6. After disposer is properly installed, place safety baffle (2) and stopper (1) in collar as required.